

# Improve your carbon footprint with Ultramid® Biomass Balance

High performance polyamide derived  
from renewable raw material



 **BASF**

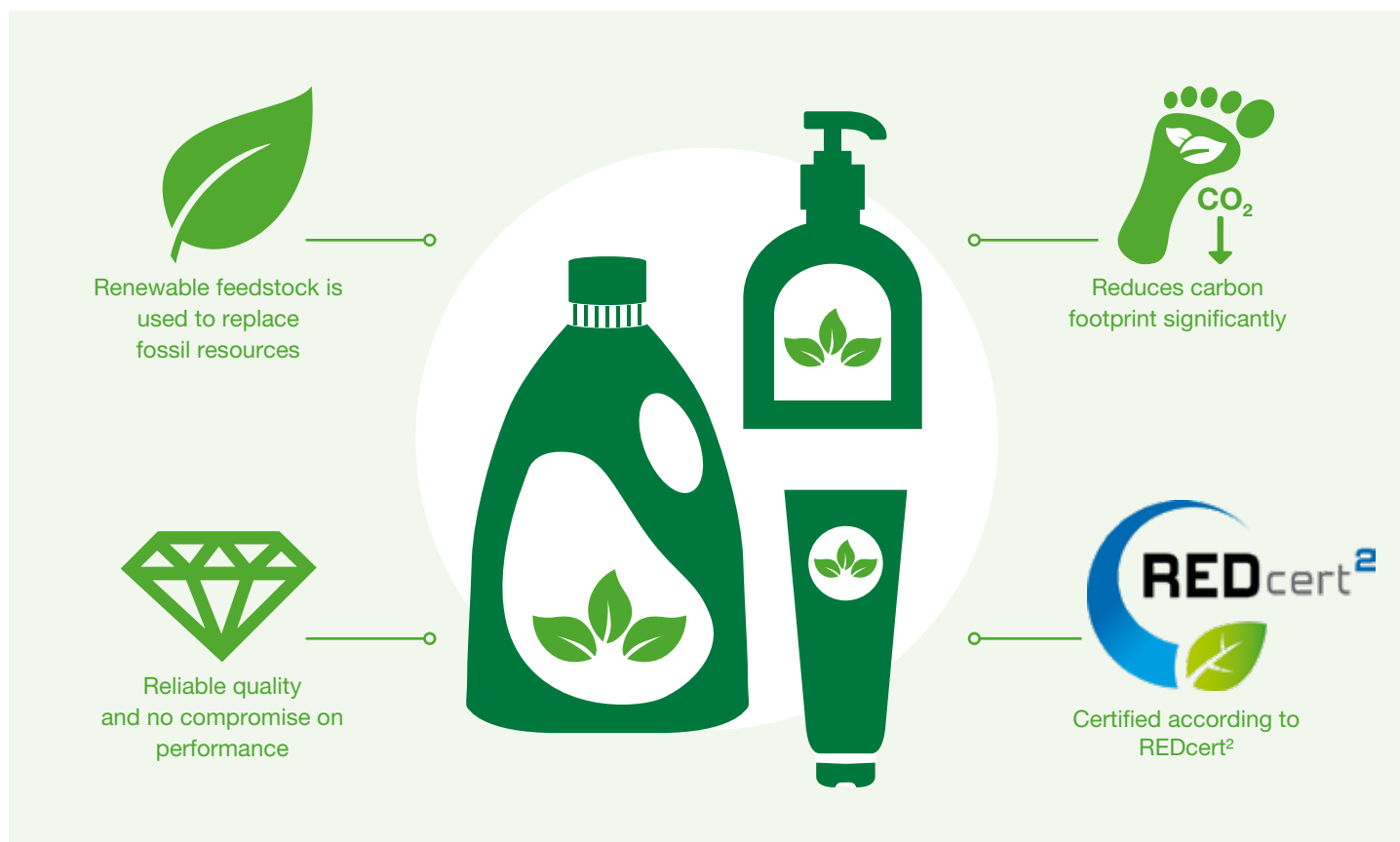
We create chemistry

# You want to improve the carbon footprint of your products significantly?

Ultramid® Biomass Balance opens up new opportunities to create more sustainable packaging – all without the need to change your production setup. BASF has developed an approach to derive groundbreaking products from renewable raw materials: Certified renewable feedstock is used

to replace fossil resources at the beginning of the production process and is then allocated to sales products in the respective quantities. Without any compromises on quality or performance you can contribute to quantifiable reduced greenhouse gas emissions.

## Ultramid® Biomass Balance helps to improve your carbon footprint:



Learn more about the **Biomass Balance Approach by BASF**

[basf.com/biomass-balance](https://basf.com/biomass-balance)

You are interested in  
Ultramid® Biomass Balance, please contact

### Extrusion Infopoint

E-Mail: [extrusion.ultramid@basf.com](mailto:extrusion.ultramid@basf.com)

Phone: +49 621 60-4 28 88

 **BASF**

We create chemistry